

C10 FLOOR PLAN

1,150 SQUARE FEET

2 BEDROOM/2 BATH

3RD THROUGH 15TH FLOORS

PENTHOUSE 16TH AND 17TH FLOORS

Unique two bedroom floor plan includes the following world-class features and premium amenities:

Two contemporary and unique finishing options available

Shaker style cherry cabinets with brushed nickel hardware, stainless steel Whirlpool® appliances, above-range microwave, porcelain tile backsplash, glass accent doors, built-in wine rack and pantry (*Penthouse Floors*)

Cherry shaker style kitchen cabinetry with brushed nickel hardware, black Whirlpool® appliances, above-range microwave, stainless steel backsplash, glass accent doors, built-in wine rack and pantry

Granite countertops and moveable kitchen islands with additional storage

Sexy bathroom with 36-inch soaking tub, graphic tile surrounds, porcelain tile floors, adjustable-height rain shower head, curved shower rod, cultured marble vanity, vessel sink, deep drawer storage, towel shelf, custom framed mirror and medicine cabinet (*Penthouse Floors*)

Sexy bathroom with 36-inch soaking tub, subway tile surround, black and white hexagon tile floors, adjustable-height rain shower head, curved shower rod, cultured marble vanity, deep drawer storage, towel shelf, custom framed mirror and medicine cabinet.

Fireplace with cable TV outlet (*Penthouse Floors*)

Translucent sliding glass bedroom barn door

Master suite featuring an oversized walk-in closet and attached bathroom

Spacious second bedroom with walk-through closet and attached bathroom

Track lighting in the kitchen and baths

Corner unit with city views

Second bathroom with 5-foot shower, tile surround, tile floors, adjustable-height rain shower head, shower glass doors, cultured marble vanity, deep drawer storage, towel shelf, custom framed mirror and medicine cabinet

Full size GE® stacked washer and dryer

Wood floors throughout living space

Berber carpet in bedrooms

In-unit apartment storage and separate media nook

Custom closets with single and double-hung shelving, wall-mounted shoe rack and linen closets

Soaring 10-foot ceilings

Oversized windows with window treatments

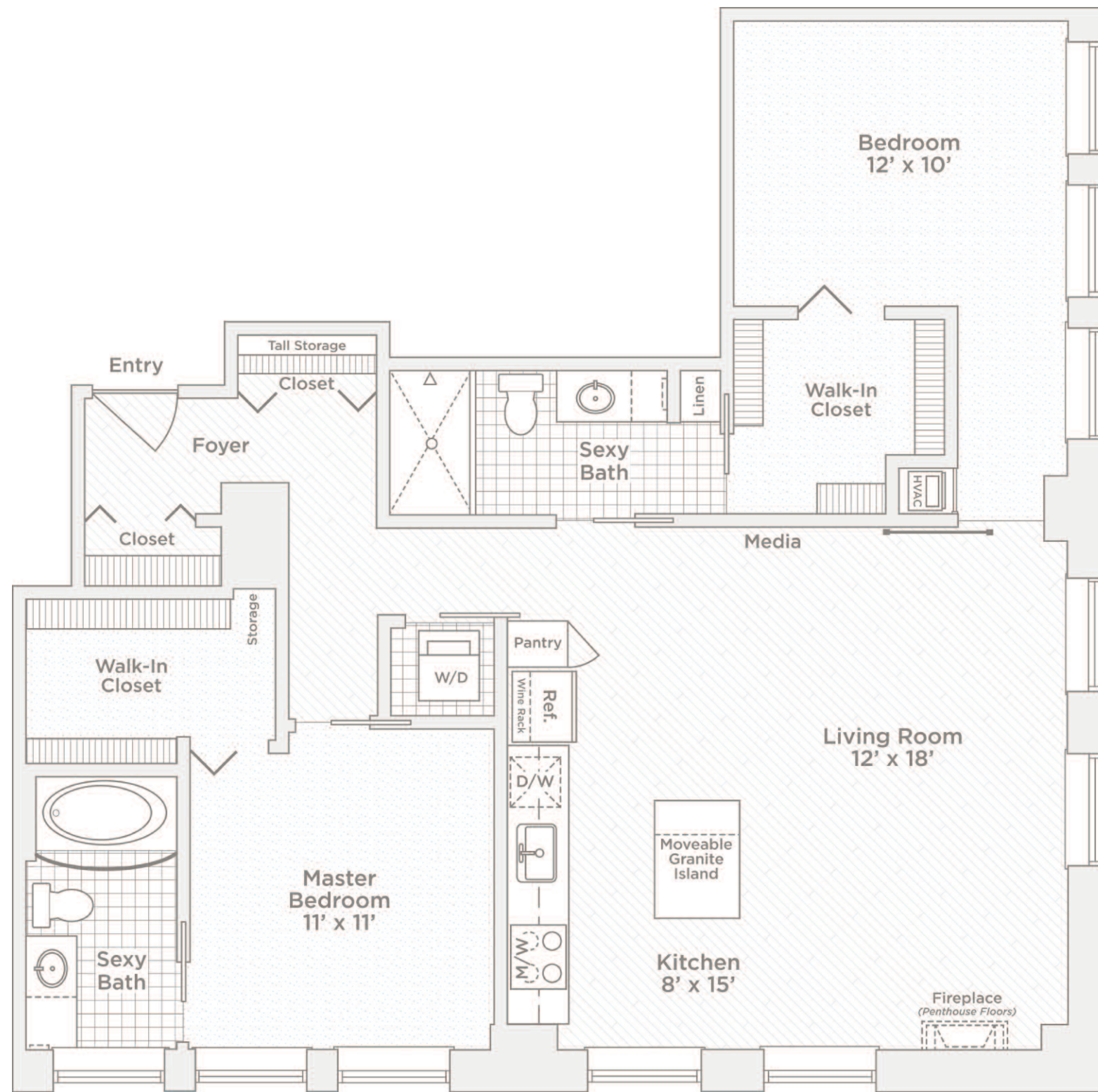
Heating and cooling with a 24/7/365 programmable thermostat

Sound controlled and energy efficient environment

Engineered and built to achieve the NAHB Green Building Standard

Space-saving pocket, bi-fold and sliding barn doors

V.A.L.U. Added Luxury Upgrades available



Artist's rendition. Floorplans and finishes vary by apartment. All dimensions approximate.

5/13



SOO LINE BUILDING
CITY APARTMENTS

Your Name.....

Your Apartment.....

Your Address.....

Date

101 South 5th Street | Minneapolis, MN 55402
P: 612.808.6820 | F: 612.808.6821
soolinebldgcityapts.com

VILLAGEGREEN
Lifestyle for Rent
EXPLORE **VILLAGEGREEN.COM**