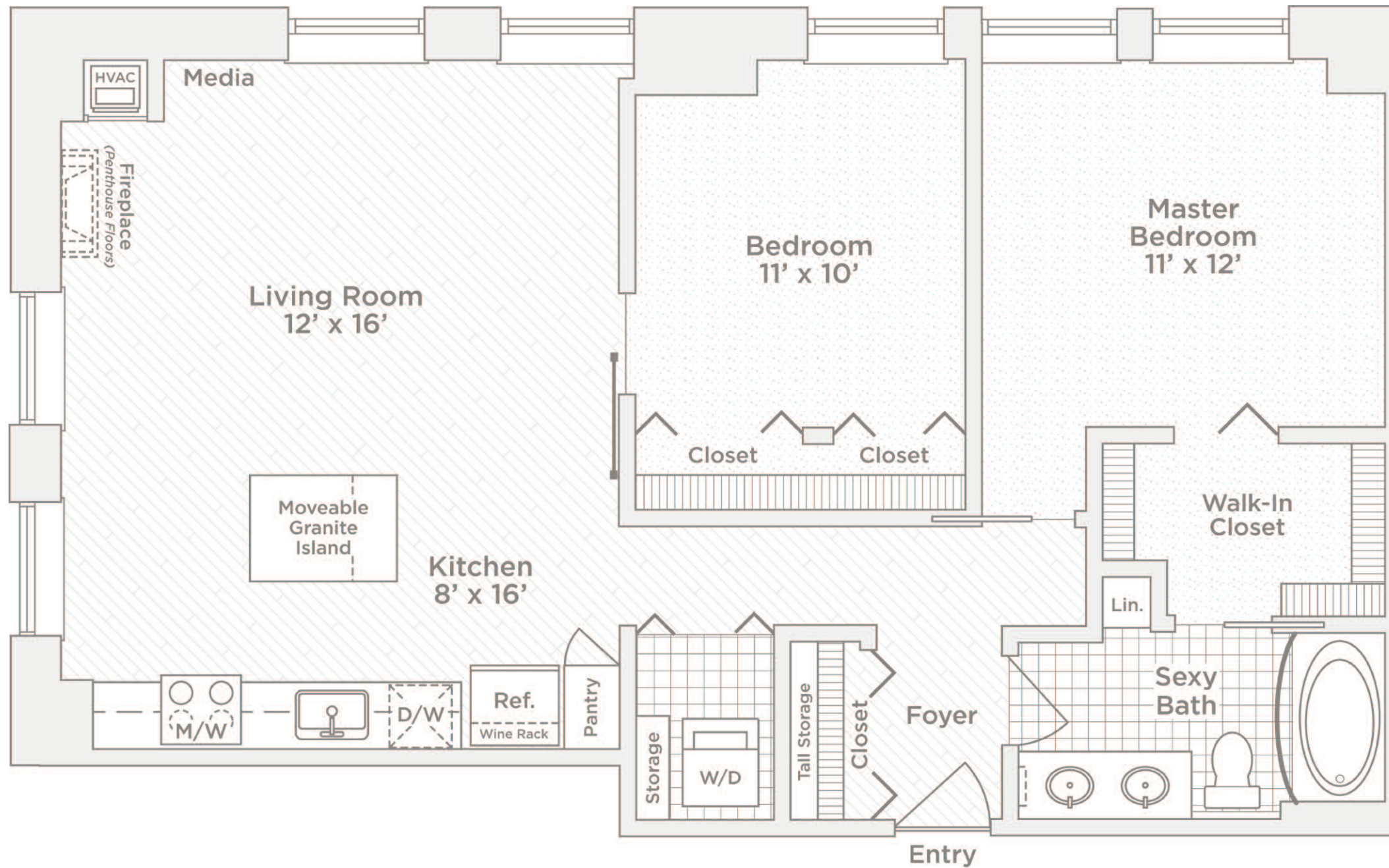


# B4 FLOOR PLAN

925 SQUARE FEET

2 BEDROOM/1 BATH

4TH THROUGH 15TH FLOORS  
**PENTHOUSE 16TH AND 17TH FLOORS**

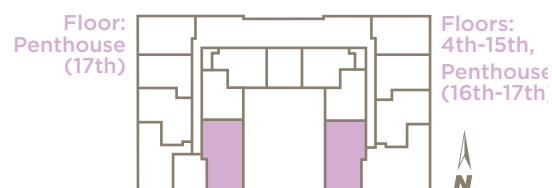


**Unique two bedroom floor plan includes the following world-class features and premium amenities:**

- Two contemporary and unique finishing options available
- Shaker style cherry cabinets with brushed nickel hardware, stainless steel Whirlpool® appliances, above-range microwave, porcelain tile backsplash, glass accent doors, built-in wine rack and pantry (*Penthouse Floors*)
- Contemporary, cherry shaker style kitchen cabinetry with brushed nickel hardware, black Whirlpool® appliances, above-range microwave, stainless steel backsplash, glass accent doors, built-in wine rack and pantry
- Granite countertops and moveable kitchen islands with additional storage
- Sexy bathroom with 36-inch soaking tub, graphic tile surrounds, porcelain tile floors, adjustable-height rain shower head, curved shower rod, cultured marble vanity, double vessel sink, deep drawer storage, towel shelf, custom framed mirror and medicine cabinet (*Penthouse Floors*)
- Sexy bathroom with 36-inch soaking tub, subway tile surround, black and white hexagon tile floors, adjustable-height rain shower head, curved shower rod, cultured marble double-sink vanity, deep drawer storage, towel shelf, custom framed mirror and medicine cabinet.
- Fireplace with cable TV outlet (*Penthouse Floors*)
- Track lighting in the kitchen and bath
- Translucent sliding glass bedroom barn door
- Master bedroom with walk-through closet to bathroom
- Corner unit with large window
- Full-sized GE® stacked washer and dryer
- Wood floors throughout living space
- Berber carpet in bedrooms
- In-unit apartment storage and separate media nook
- Custom closets with single and double-hung shelving, wall-mounted shoe rack and linen closets
- Soaring 10-foot ceilings
- Oversized windows with window treatments
- Heating and cooling with a 24/7/365 programmable thermostat
- Sound controlled and energy efficient environment
- Engineered and built to achieve the NAHB Green Building Standard
- Space-saving pocket, bi-fold and barn doors
- V.A.L.U. Added Luxury Upgrades available

Artist's rendition. Floorplans and finishes vary by apartment. All dimensions approximate.

5/13



**SOO LINE BUILDING**  
 CITY APARTMENTS

Your Name.....

Your Apartment.....

Your Address.....

Date .....

101 South 5th Street | Minneapolis, MN 55402  
 P: 612.808.6820 | F: 612.808.6821  
[soolinebldgcityapts.com](http://soolinebldgcityapts.com)

**VILLAGEGREEN**  
 Lifestyle for Rent  
**EXPLORE VILLAGEGREEN.COM**