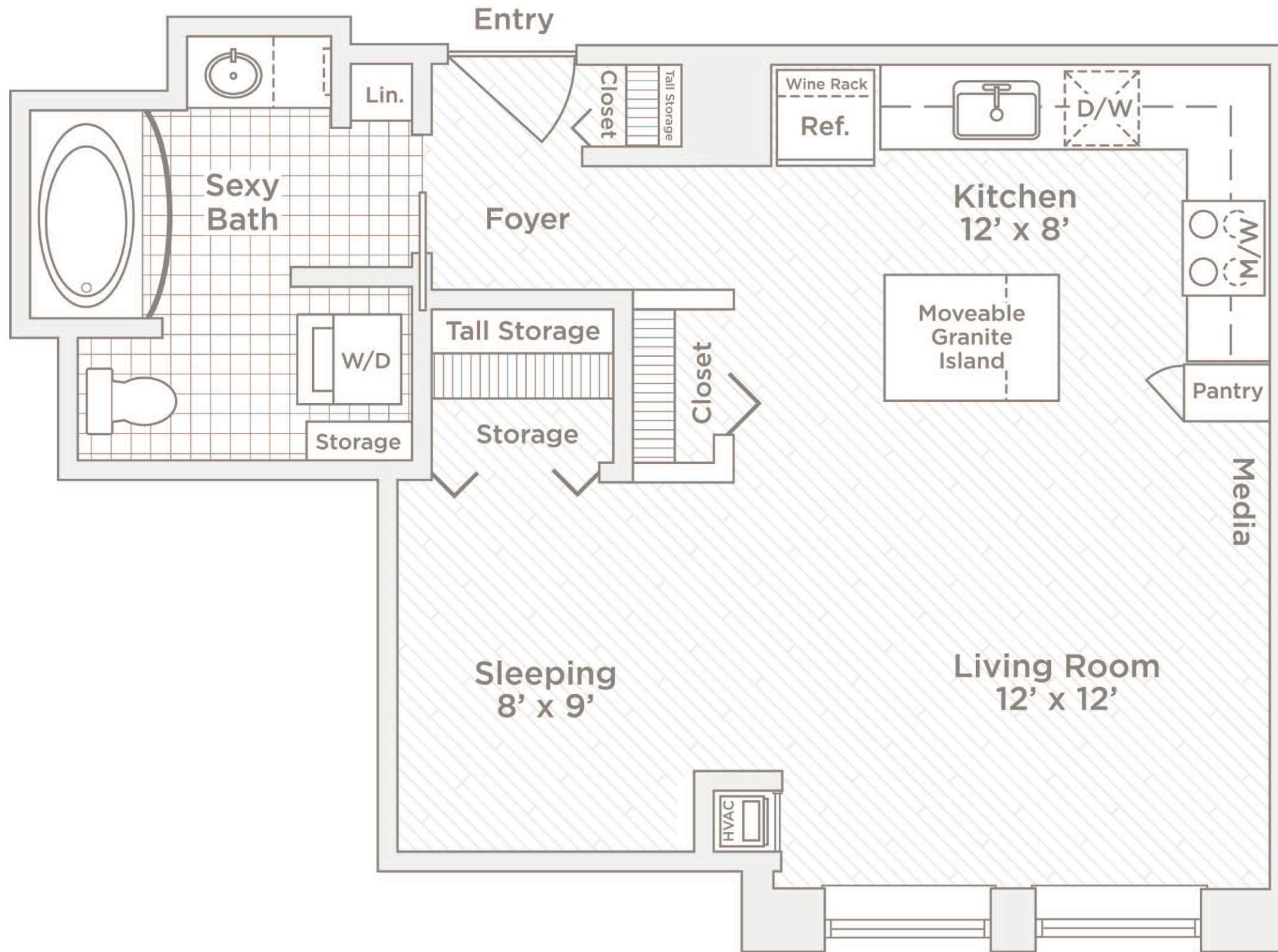


S4 FLOOR PLAN

525 SQUARE FEET

STUDIO/1 BATH

4TH THROUGH 15TH FLOORS



Unique studio floor plan includes the following world-class features and premium amenities:

Contemporary, white full-face kitchen cabinetry with brushed nickel hardware, white Whirlpool® appliances and above-range microwave

Custom kitchen finishes including stainless steel backsplash, glass accent doors, built-in pantry and wine rack

Granite countertops and moveable kitchen island with extra storage

Sexy bathroom with 36-inch soaking tub, subway tile surround, black and white hexagon tile floors, adjustable-height rain shower head, curved shower rod, cultured marble vanity, deep drawer storage, towel shelf, custom framed mirror and medicine cabinet.

Separate sleeping nook or office space

Track lighting in kitchen and bath

Full-sized GE® stacked washer and dryer

Wood floors throughout living space

In-unit apartment storage and separate media nook

Large custom closets with single and double hung shelving, wall-mounted shoe rack, coat and linen closet

Soaring 10-foot ceilings

Oversized windows with window treatments

Heating and cooling with a 24/7/365 programmable thermostat

Sound controlled and energy efficient environment

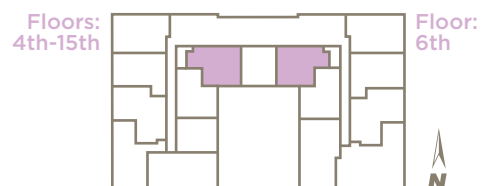
Engineered and built to achieve the NAHB Green Building Standard

Space-saving pocket and bi-fold doors

V.A.L.U. Added Luxury Upgrades available

Artist's rendition. Floorplans and finishes vary by apartment. All dimensions approximate.

5/13



SOO LINE BUILDING
CITY APARTMENTS

Your Name.....
 Your Apartment.....
 Your Address.....
 Date

101 South 5th Street | Minneapolis, MN 55402
 P: 612.808.6820 | F: 612.808.6821
soolinebldgcityapts.com

VILLAGEGREEN
Lifestyle for Rent
EXPLORE VILLAGEGREEN.COM